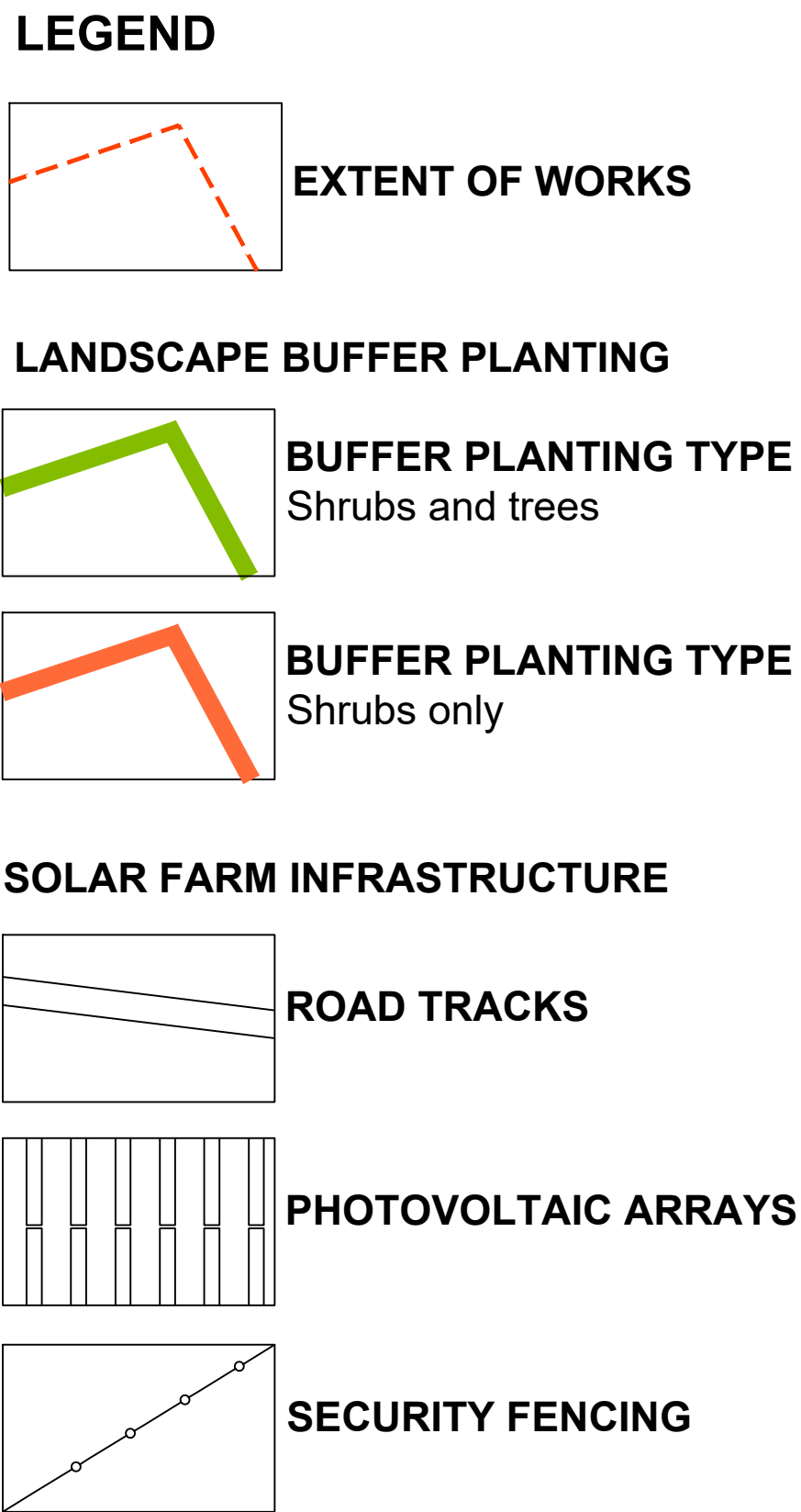
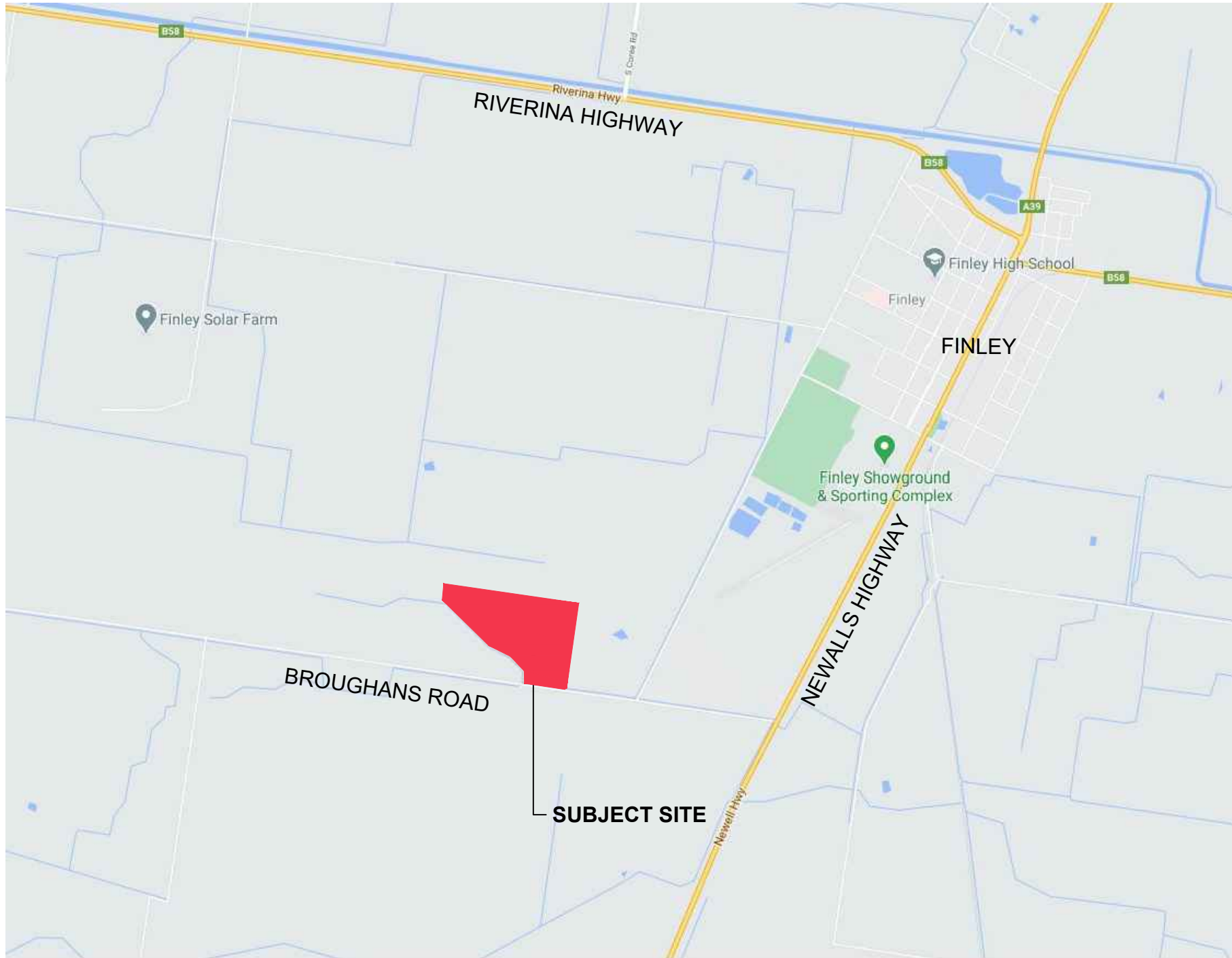


# FINLEY SOLAR FARM

## LANDSCAPE BUFFER PLANTING

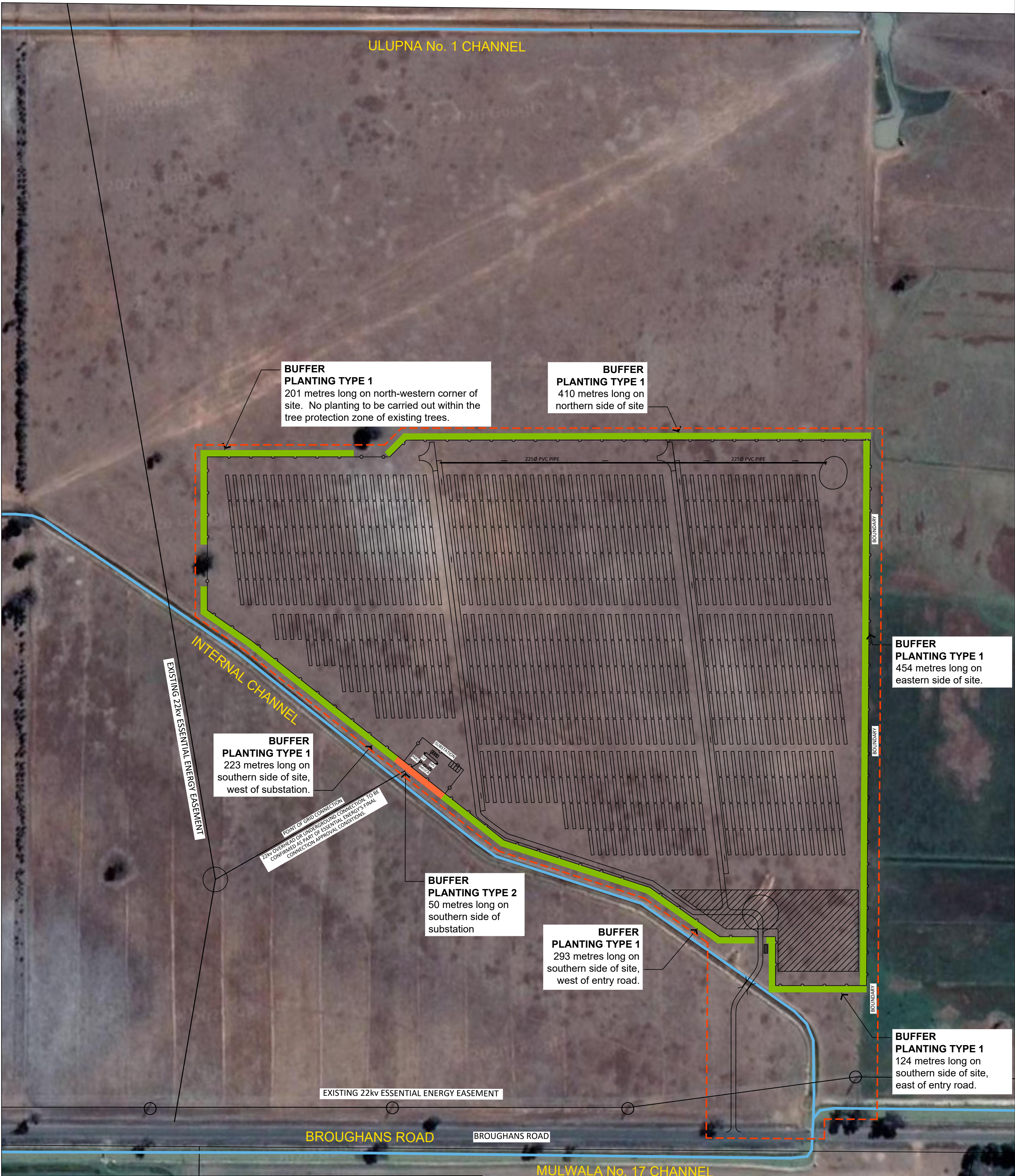
### BROUGHANS ROAD, FINLEY, N.S.W.



**1** LOCATION PLAN  
SITE LOCATION NTS

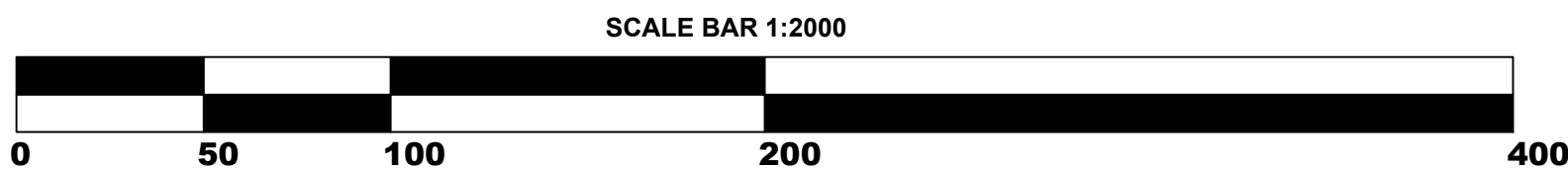
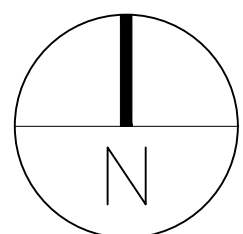
**STANDARD NOTES**

- SET OUT AND DIMENSIONS.** WRITTEN DIMENSIONS SHALL TAKE PRECEDENCE OVER SCALE. CHECK ALL DRAWING SCALES IN CONJUNCTION WITH DRAWING SIZE. DRAWINGS MUST BE READ IN ASSOCIATION WITH OTHER CONSTRUCTION DRAWINGS.
- SERVICES AND SITE ASSETS.** THE CONTRACTOR SHALL VERIFY THE NATURE AND LOCATION OF THE 'AS BUILT' OF ALL EXISTING SERVICES AND RETAINED SITE ASSETS AFFECTED BY THEIR WORKS. SERVICES SHOWN ARE INDICATIVE ONLY.
- REFERENCE.** THE CONTRACTOR SHALL REFER TO ALL DRAWINGS PRIOR TO AND DURING THE WORKS.
- DISCREPANCIES.** NOTIFY SUPERINTENDENT OF ANY SUSPECTED OR KNOWN DISCREPANCIES OR ERRORS PRIOR TO ORDERING OF AFFECTED MATERIALS AND OR CONSTRUCTION OF AFFECTED WORKS.
- RELEVANT STANDARDS.** THE CONTRACTOR SHALL UNDERTAKE ALL PRICING AND WORKS IN ACCORDANCE WITH CURRENT INDUSTRY BEST PRACTICE AND ALL RELEVANT AUSTRALIAN STANDARDS.
- EXISTING TREES**  
EXISTING TREES TO BE PROTECTED AND RETAINED DURING CONSTRUCTION. REFER AS4970 PROTECTION OF TREES ON DEVELOPMENT SITES. THE CONTRACTOR SHALL USE THE FORMULA BASED ON HEIGHT AND DBH AND SUPPLY AND ERECT THE TREE PROTECTION ZONE FOR EACH TREE. NO EARTHWORKS, LEVEL CHANGES OR STOCKPILING IS TO OCCUR WITHIN THE TREE PROTECTION ZONE.
- FALLS.** ALL AREAS ARE TO BE GRADED EVENLY TO ENSURE POSITIVE DRAINAGE. PONDING IS UNACCEPTABLE.
- BUFFER PLANTING AREA PREPARATION.** APPLY APPROPRIATE HERBICIDE TO REMOVE WEEDS AND PASTURE GRASS. FOR ALL BUFFER PLANTING TYPES EXCEPT TYPE 2, CULTIVATE ON SITE TOPSOIL TO 200mm DEPTH WITH SOIL AMELIORATION ADDITIVES. SUPPLY AND INSTALL 100mm COMPACTED DEPTH OF APPROVED MULCH. BUFFER PLANTING TYPE 2 SHALL HAVE INDIVIDUAL HOLES FOR EACH SHRUB / TREE.
- CLEARANCE TO ROADWAYS**  
ENSURE THAT ALL PLANTING HAS A CLEARANCE OF MINIMUM 3.0 METRES TO ALL ROAD TRACKS.



**2** LANDSCAPE PLAN  
GENERAL ARRANGEMENT OF BUFFER PLANTING 1:2000@A1

ISSUE	DATE	COMMENT
A	17/12/2020	Preliminary. Client review
B	22/01/2021	COUNCIL RE-SUBMISSION

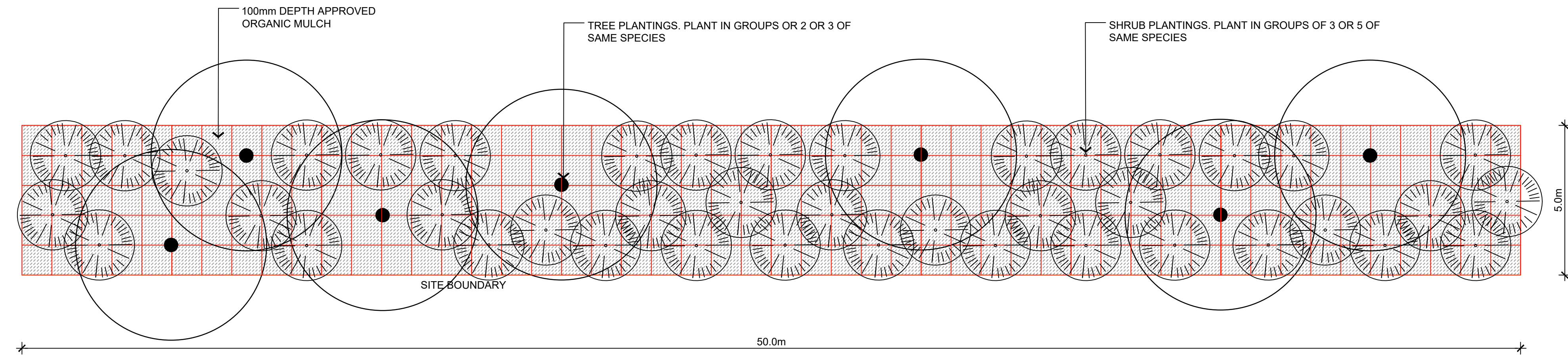


© 2020 Copyright.  
Copyright of designs is retained by FSLA. Written approval is required for reproduction.

PO Box 1198 Albury NSW 2640  
M 0411 811308  
E fiona@fsla.com.au  
www.fsla.com.au  
ABN 68 437 343 209

Project:	FINLEY SOLAR FARM	
Address:	BROUGHANS ROAD, FINLEY, N.S.W.	
Drawing Title:	LANDSCAPE PLAN	Revision: B
Date:	17 DECEMBER 2020	Issue: COUNCIL RE-SUBMISSION
Dwg No:	20032 L01	





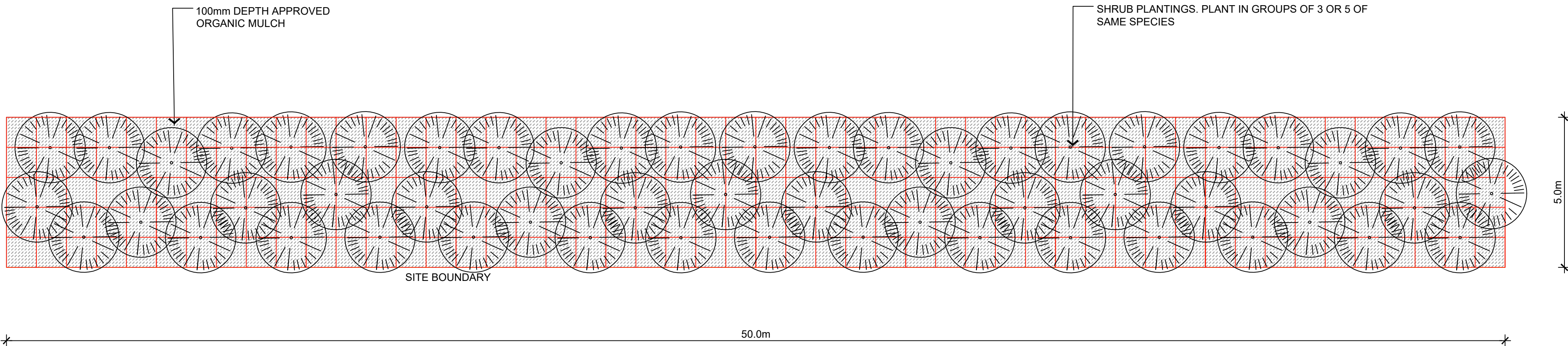
PLANT QUANTITIES FOR 250sqm

CANOPY TREES:  
7 TOTAL NO.

SHRUBS:  
42 TOTAL NO.

NOTE:  
GRID LINES ARE SHOWN AT 1.0m SPACING  
TO ASSIST WITH SET-OUT OF ALL PLANTS.

1 BUFFER PLANTING TYPE 1  
TYPICAL PLANTING PLAN - 50m TRANSECT 1:100@A1

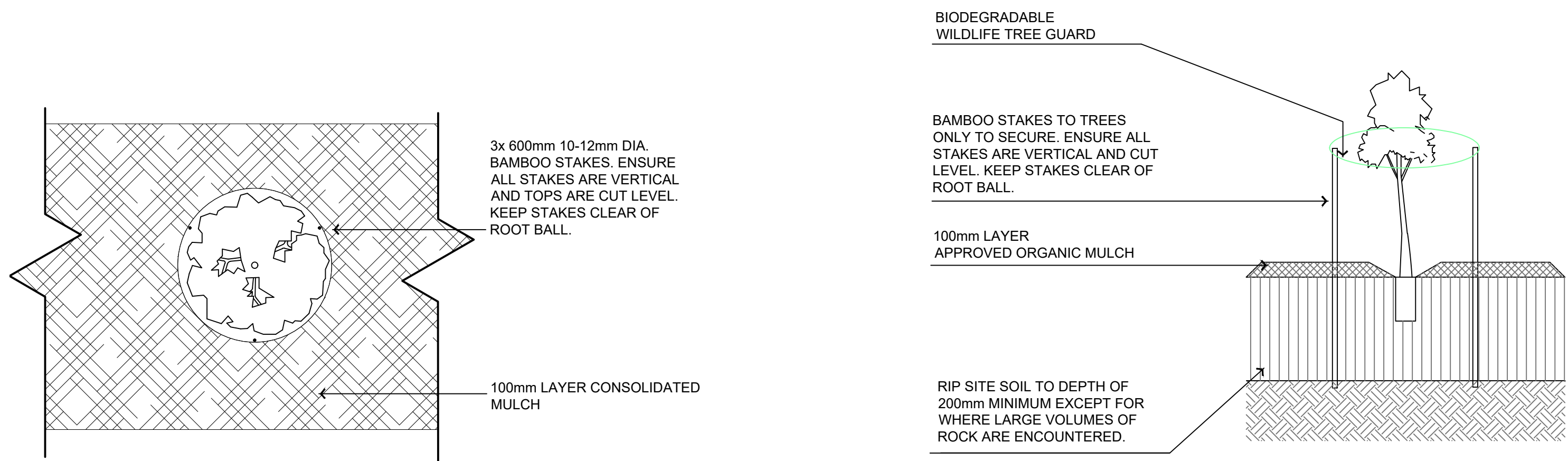


PLANT QUANTITIES FOR 250sqm

SHRUBS:  
54 TOTAL NO.

NOTE:  
GRID LINES ARE SHOWN AT 1.0m SPACING  
TO ASSIST WITH SET-OUT OF ALL PLANTS.

2 BUFFER PLANTING TYPE 2  
TYPICAL PLANTING PLAN - 50m TRANSECT 1:100@A1



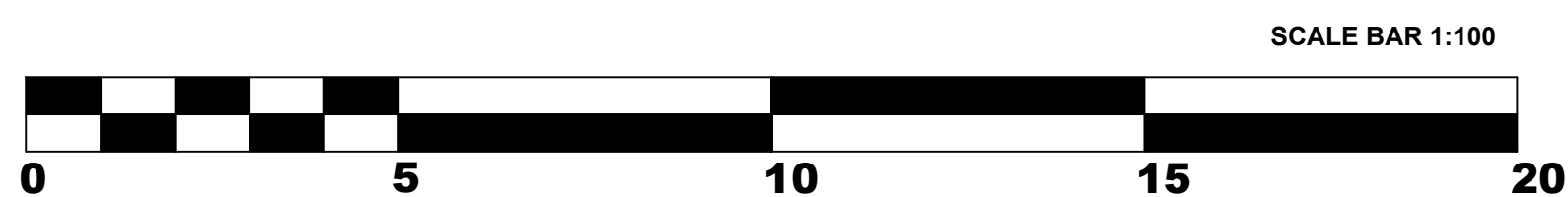
3 TUBESTOCK PLANTING WITH GUARD  
TYPICAL PLAN 1:20@A1

4 TUBESTOCK PLANTING WITH GUARD  
TYPICAL SECTION 1:20@A1

TYPICAL PLANT SCHEDULE

Botanical Name	Common Name	Installation Size	% of mix
<b>TREES</b>			
<i>Acacia stenophylla</i>	River cooba	Tubestock	10%
<i>Acacia pendula</i>	Weeping myall	Tubestock	10%
<i>Allocasuarina leuhmanni</i>	Buloke	Tubestock	10%
<i>Brachychiton populneus</i>	Kurrajong	Tubestock	10%
<i>Callitris glaucophylla</i>	White cypress pine	Tubestock	5%
<i>Casuarina cristata</i>	Black oak	Tubestock	5%
<i>Eucalyptus largiflorens</i>	Black box	Tubestock	5%
<i>Eucalyptus macrocarpa</i>	Grey box	Tubestock	25%
<i>Eucalyptus melliodora</i>	Yellow Box	Tubestock	15%
<i>Eucalyptus populnea subsp. bimbil</i>	Bimble box	Tubestock	5%
			<b>100%</b>
<b>SHRUBS less than 6.0 metres</b>			
<i>Acacia acinacea</i>	Gold dust wattle	Tubestock	20%
<i>Acacia paradoxa</i>	Hedge wattle	Tubestock	20%
<i>Bursaria spinosa</i>	Sweet bursaria	Tubestock	20%
<i>Dodonaea viscosa ssp spatulata</i>	Hop bush	Tubestock	20%
<i>Pittosporum angustifolium</i>	Gumbi gumbi	Tubestock	20%
			<b>100%</b>

ISSUE	DATE	COMMENT
A	17/12/2020	Preliminary. Client review
B	22/01/2021	COUNCIL RE-SUBMISSION



PO Box 1198 Albury NSW 2640  
M 0411 811308  
E fiona@fsla.com.au  
www.fsla.com.au  
ABN 68 437 343 209

Project:	FINLEY SOLAR FARM	
Address:	BROUGHANS ROAD, FINLEY, N.S.W.	
Drawing Title:	TYPICAL BUFFER PLANTING PLANS, PLANTING DETAILS & PLANT SCHEDULE	Revision: B
Date:	17 DECEMBER 2020	Issue: COUNCIL RE-SUBMISSION
		Dwg No: 20032 L02